

Ride 2. Frome

Cyclenation/CTC Conference 13th October 2012

Ride Leaders

Martin McDonnell – 07884 265071
Steve Loughran

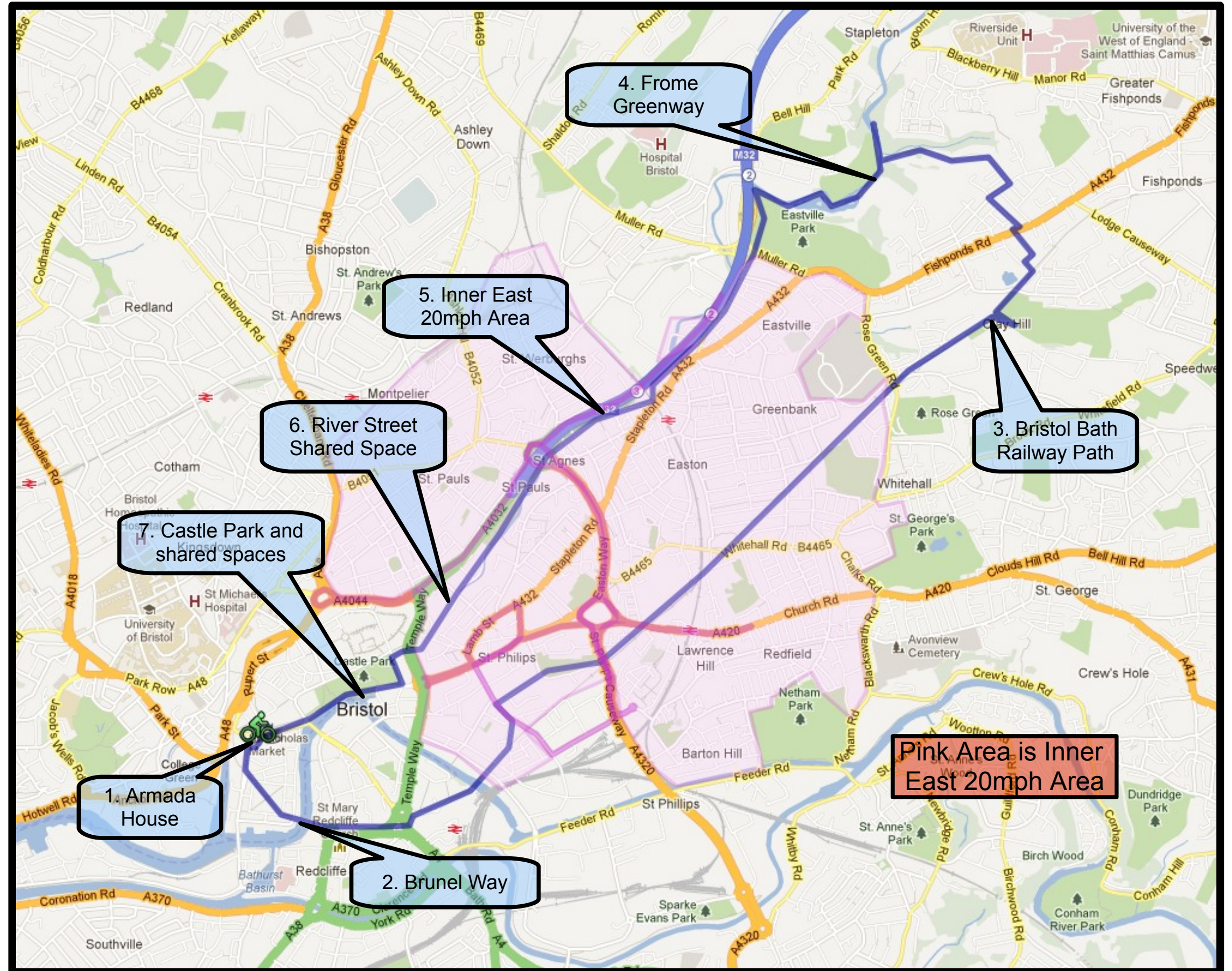
Timings:

Leave: 09:30am
Arrive: 11:30am
Distance: 7.4 miles

Emergency number
07501 355600

Google map link:

<http://goo.gl/maps/HiYrc>





1. Key Points on Ride

- Greenways, established and new
- Bristol Bath Railway Path
- Parks
- Frome Greenway
- Inner East 20mph Area
- Permeability and shared use in the centre



2. Brunel Way

- Main walking and cycling route between centre and station
- Bascule Bridge was the only significant section of road re-allocated to bikes during Cycling City
- Unusual wide raised crossing with priority for bikes and walkers
- Queen's Square had a dual carriageway through the centre until 2000



3. Bristol Bath Railway Path

- Started in 1977 on former Midland Railway by cycling group that became Sustrans. Can be considered first link in the 10,000 mile National Cycle Network
- Carries over 1 million trips a year and experiencing congestion
- Recently extended lighting and signing but has significant pinch-points and extension into city is not to same standard



4. Frome Greenway

- Greenway route to the north of city
- Runs up to University of the West of England and major employment and residential areas
- Combination of off road and on road following river.
- M32 follows same path.
- Much discussion with parks dept on balancing all different interests

Volunteer Cycling City Rangers set up with Sustrans to monitor route, but problems keeping it going



5. Inner East 20mph Area

- One of two large areas that had 20mph limits set up in 2010. Now being extended to rest of city.
- Prominent signing at entry, with less obtrusive repeater signs throughout. Vehicle Activated Displays can be moved to problem areas.
- Debate about inclusion of roads with higher current speeds. Political leadership was key to achieving close to a 'total 20' approach



6. River Street and 20mph Area

- Inner East 20mph area with prominent signing on entry and smaller repeater signs.
- Frome Greenway passes through River Street development as it leaves the centre
- Shared space and housing development funded through Section 106 as part of Cabot Circus.
- Parking controls but subtle visual cues and absence of prominent signing means cars are cautious and respectful when entering the area.
- Wide zebra crossing at end to enable comfortable use by bikes and walkers.
- Signing, code of conduct, segregation and enforcement are pressing shared spaces issues



7. Castle Park and contraflows

- 5m wide path with segregation as part of the design and surface treatment.
- Works well due to width even when heavily used during rush hours and at lunchtimes as people head into the retail centres
- Links into the central area contraflows which increase permeability for cycling, and to Frome Greenway and Bristol-Bath path out of the city